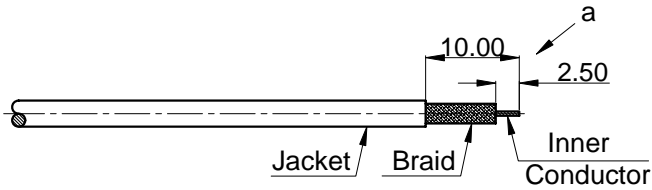
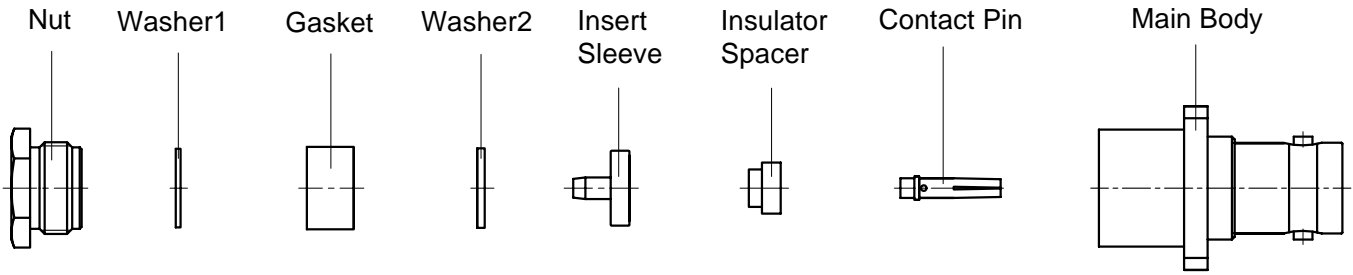


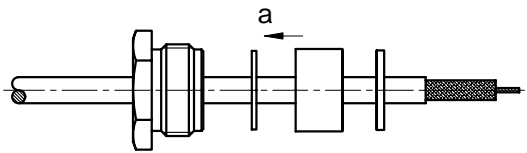
P/N: 10-02-4F04-026 (REV. B)

Description: BNC Straight Female Clamp for LMR100/RG174/RG316, 4 Hole Flange



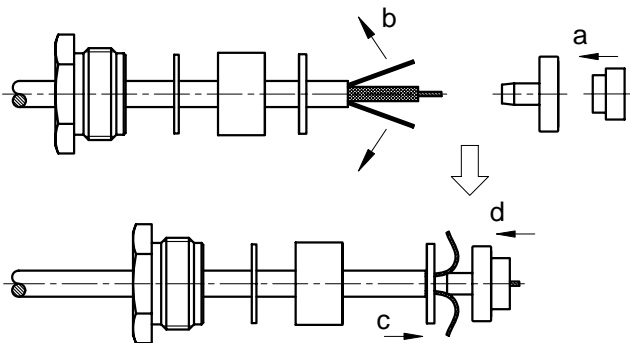
STEP 1

- a. Strip the cable according to the dimensions as shown.



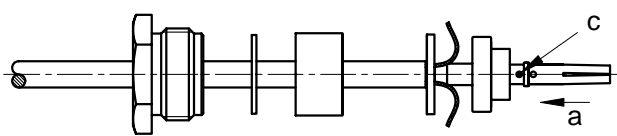
STEP 2

- a. Slide the Fastening Nut, Washer1 (thinner), Gasket, Washer2 (thicker) onto the cable in order as show.



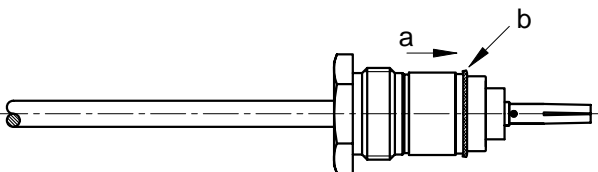
STEP 3

- a. Slide the Insulator Spacer into the Insert Sleeve.
- b. Fan the braid.
- c. Move the Washer2 (thicker) onto the cable's braid.
- d. Push the Insert Sleeve into the cable's braid.



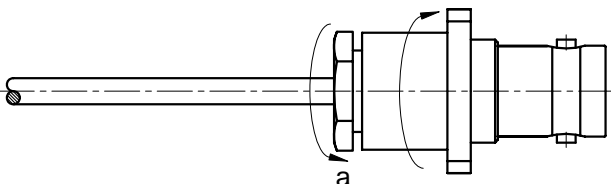
STEP 4

- a. Slide the Contact Pin onto the cable's center conductor until it stops.
- b. Solder the Contact Pin onto the cable.



STEP 5

- a. Slide the Gasket, Washer1 (thinner) and Fastening Nut until they stops (keep the Insert Sleeve still).
- b. Cut the excess of braid.



STEP 6

- a. Screw the Fastening Nut into the Main Body with wrench.